

Separation kit SKT-7000 ver. 3 for ICOM IC-7000



1. OVERVIEW

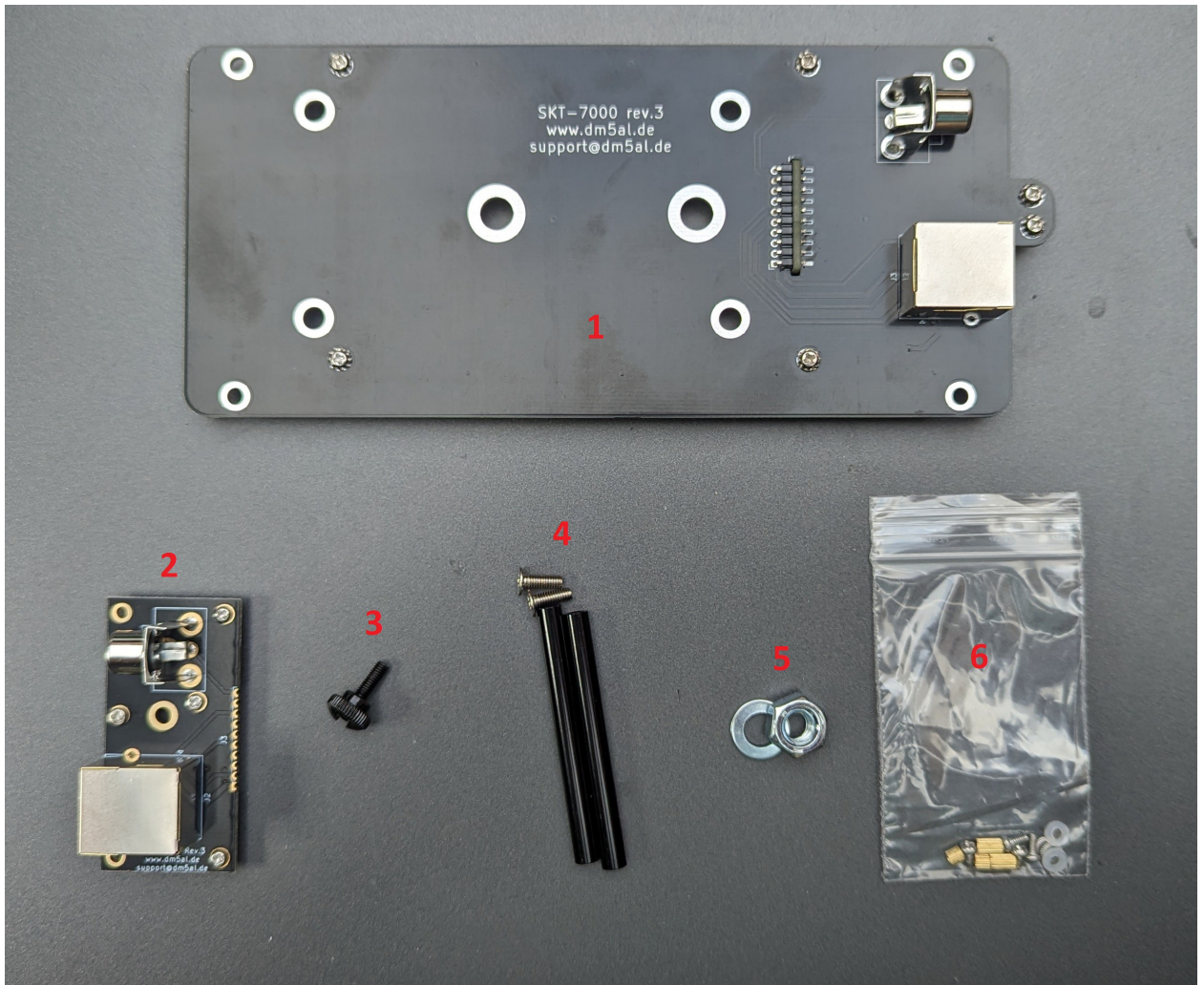
SKT-7000 separation kit is intended to be used with ICOM IC-7000 transceivers

Features:

- Combines a separation kit (OPC-1443 alternative) and a mounting bracket (MB-105A alternative);
- Desktop and mobile usage;
- Two cables required: RJ-45 cable for control interface and RCA cable for video.

The separation kit uses a normal RJ-45 cable for control interface and a RCA cable for video signal from a base unit (both cables are not included). Quality of these cables affect overall transmit and display picture quality: in some cases weak digital noise may exist during transmission or display picture could be noisy. It is recommended to use flat RJ-45 cables with shielded twisted pairs (hard to identify as they are inside of the cable, but CAT6, CAT7 or CAT8 cables may have such pairs) for control interface. For video signal it is recommended to use thick shielded 75 Ohm RCA cables. Up to 5 meters cables length is recommended.

2. SEPARATION KIT CONTENT



- 1 – Display connection PCB;
- 2 – Base unit connection PCB
- 3 – M3 thumb screw for base unit connection PCB assembly;
- 4 – 2x legs for desktop mounting;
- 5 – ¼ inch nut and a washer for mobile mounting (MB-63 has similar thread);
- 6 – spare parts.

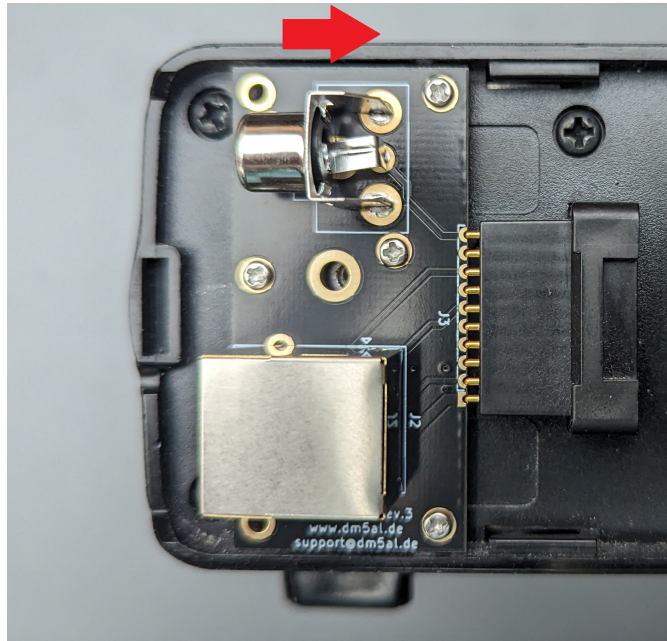
3. INSTALLATION

Attention: remove power before you install the separation kit!

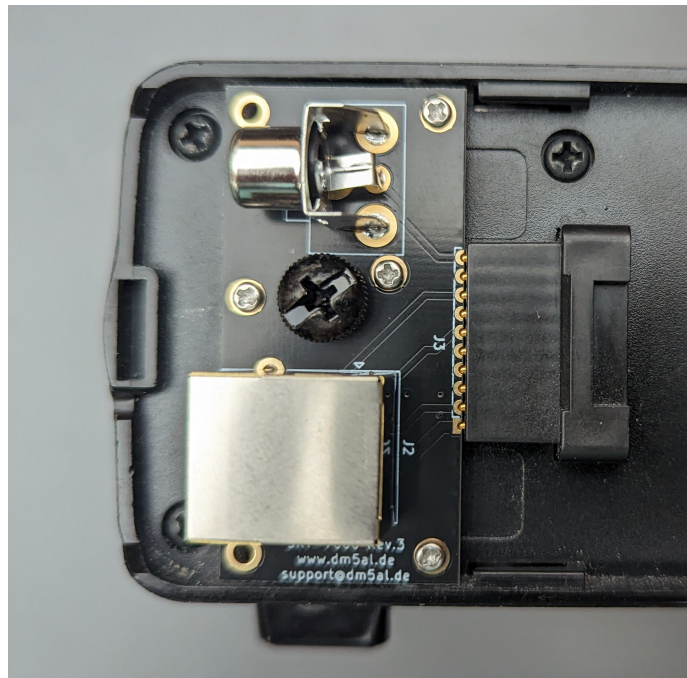
Wrong connection may damage the transceiver!

Picture below show how to install the separation kit correctly:

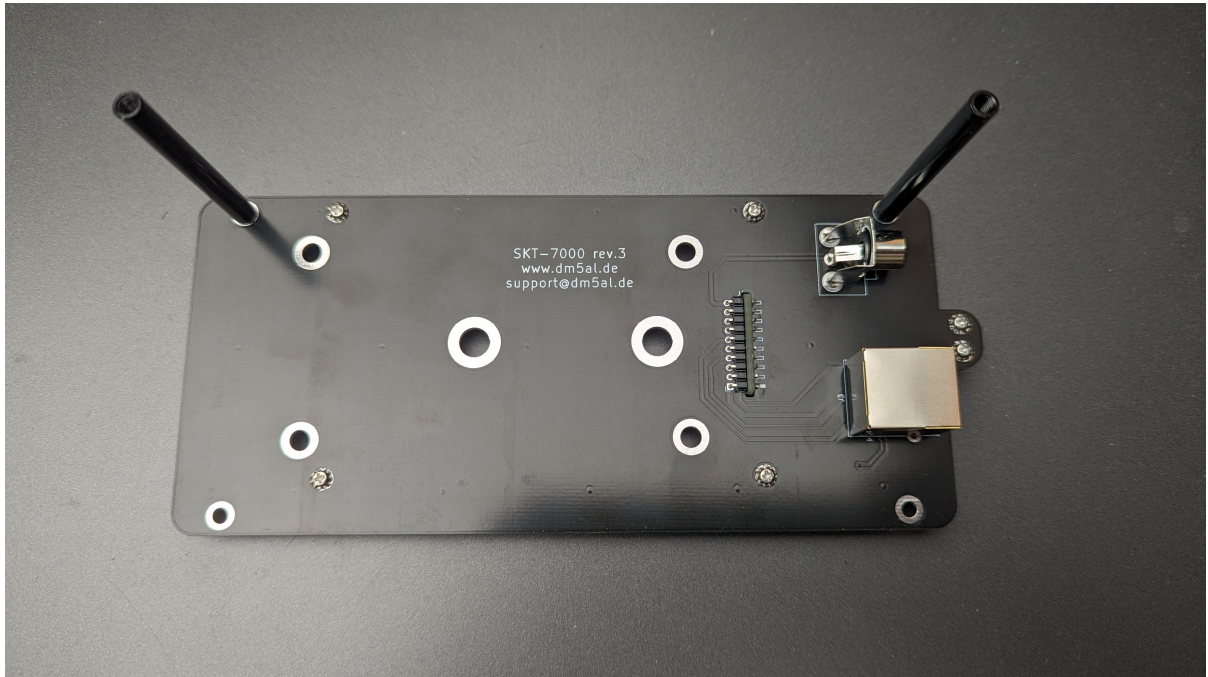
1. Position base unit adapter as it shown on a picture below. Pogo pins must be positioned strictly to half holes on the edge of the base unit adapter!



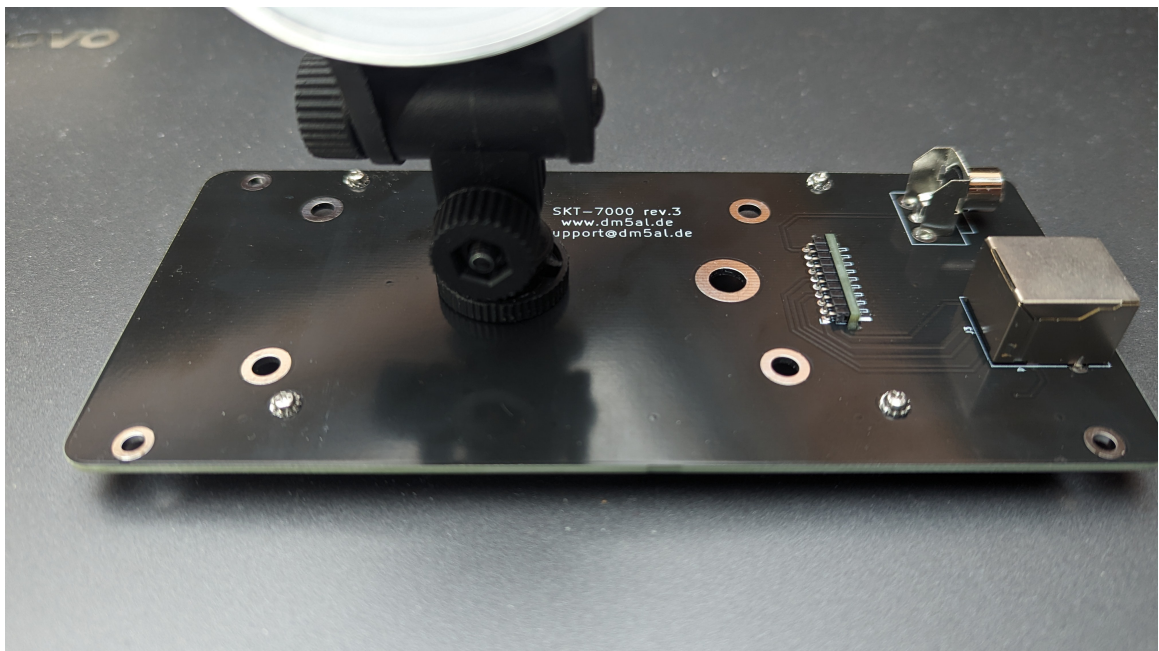
2. Push the base unit adapter and fix it with a thumb screw:



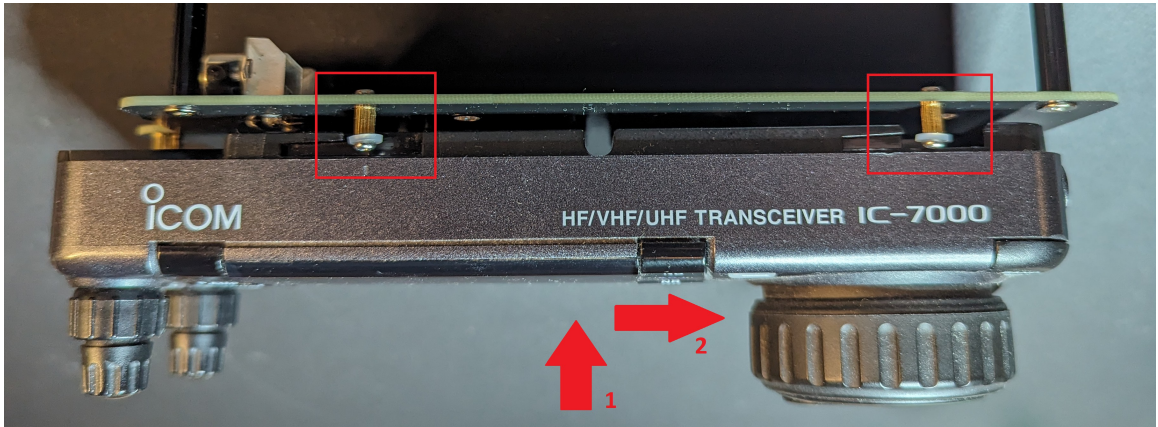
3. For desktop mounting: assembly 2 legs on the display connection PCB:



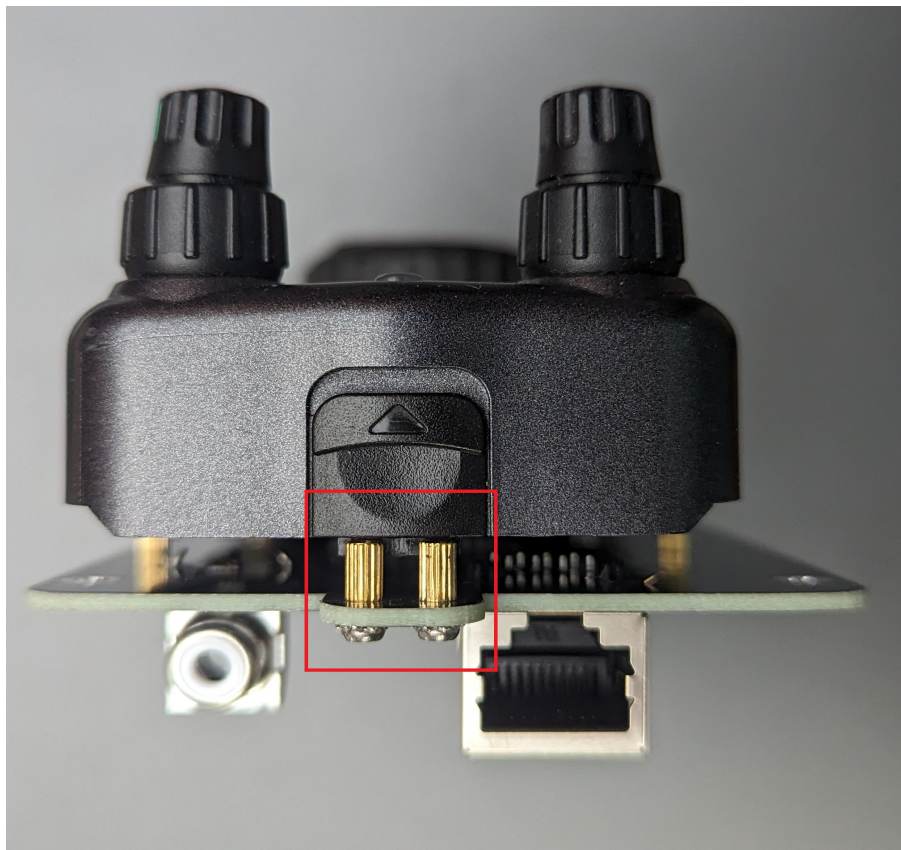
4. For mobile mounting: fix mounting bracket (shown as example) with a ¼ nut and a washer:



5. Insert a IC-7000 display unit to the display connection PCB. There are 4x stand-offs on a display connection PCB which should get in to wide slots on the display unit:

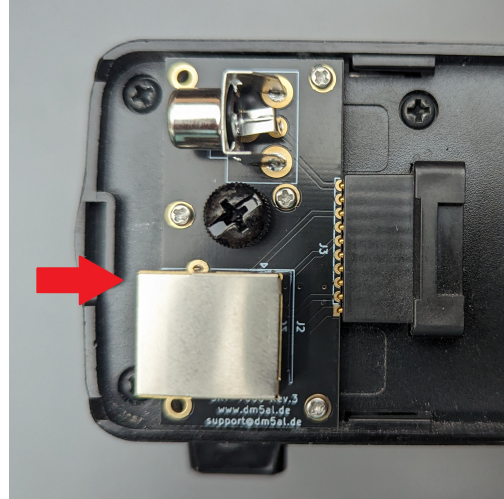
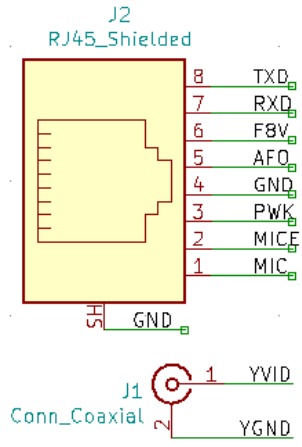


6. Slide the display unit until it is securely fixed with a locker:



7. Connect RJ-45 and RCA cables and power on the transceiver.

4. CONNECTORS PINOUT



Pin 1 position

5. SUPPORT

Web: www.dm5al.de

email: support@dm5al.de